



Building Our Future *A Sacred Presence*

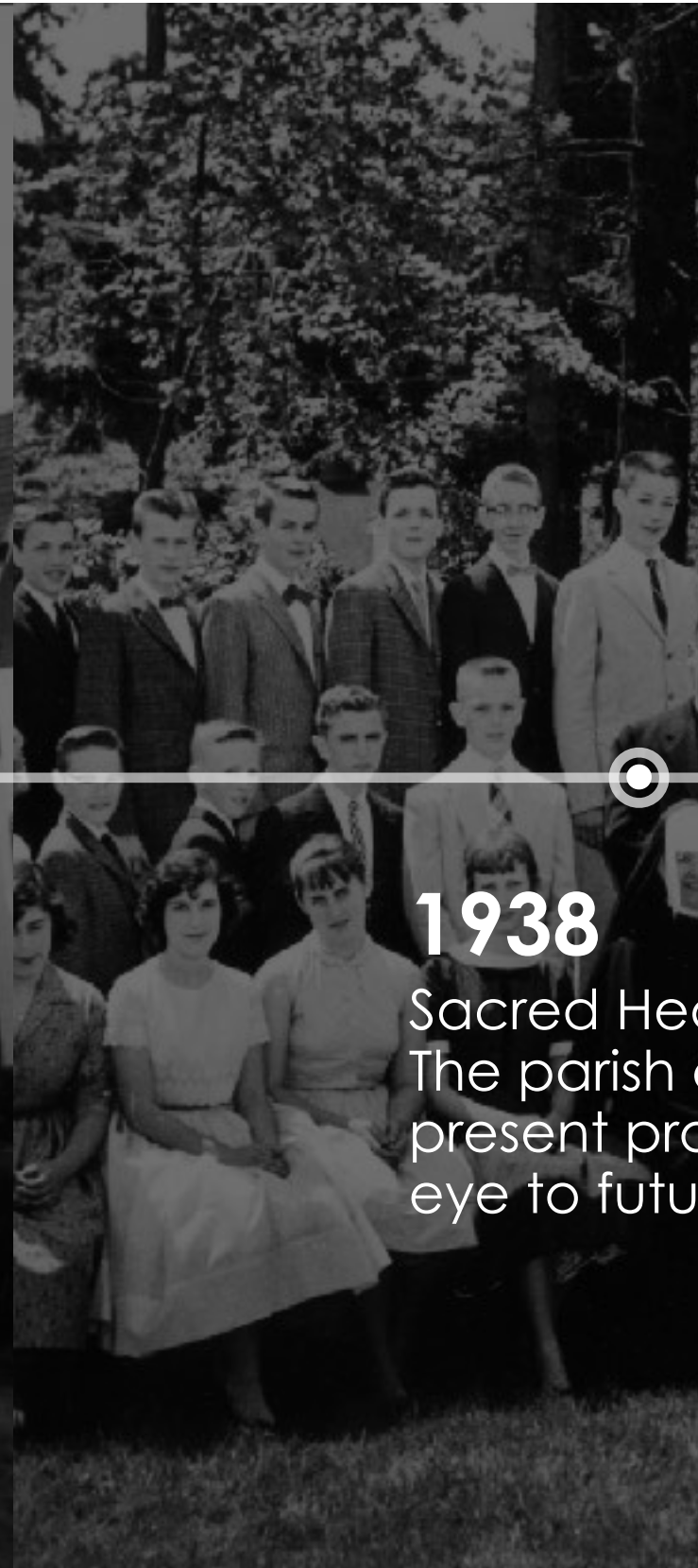
Our Lady of the Lake Parish Campaign | October 2024

The Building Our Future campaign will fund the next chapter of a rich Our Lady of the Lake history



1890

Sacred Heart Catholic Church is dedicated at First and E Streets in Lake Oswego



1938

Sacred Heart School opens. The parish acquires the present property with an eye to future expansion

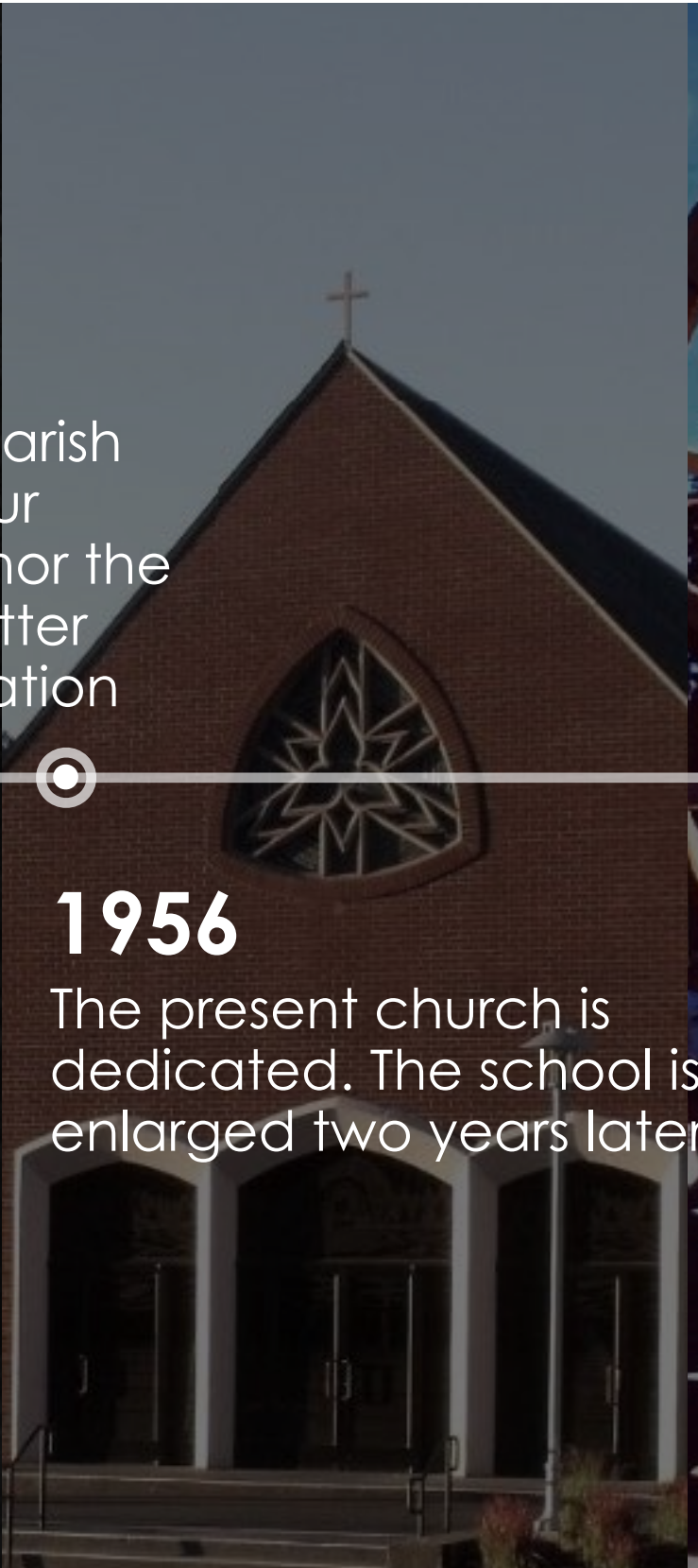
1951

On Mother's Day, the Parish name is changed to Our Lady of the Lake to honor the Blessed Mother and better identify the church location



1956

The present church is dedicated. The school is enlarged two years later



2004

The Community Counseling Service conducts a feasibility study for a \$15M campaign to construct a new Parish Center and School

Within weeks, the Archdiocese of Portland declares bankruptcy, bringing a halt to all fundraising across the Archdiocese



2012

The new school opens in Fall. Fr. Joe departs and Fr. John arrives

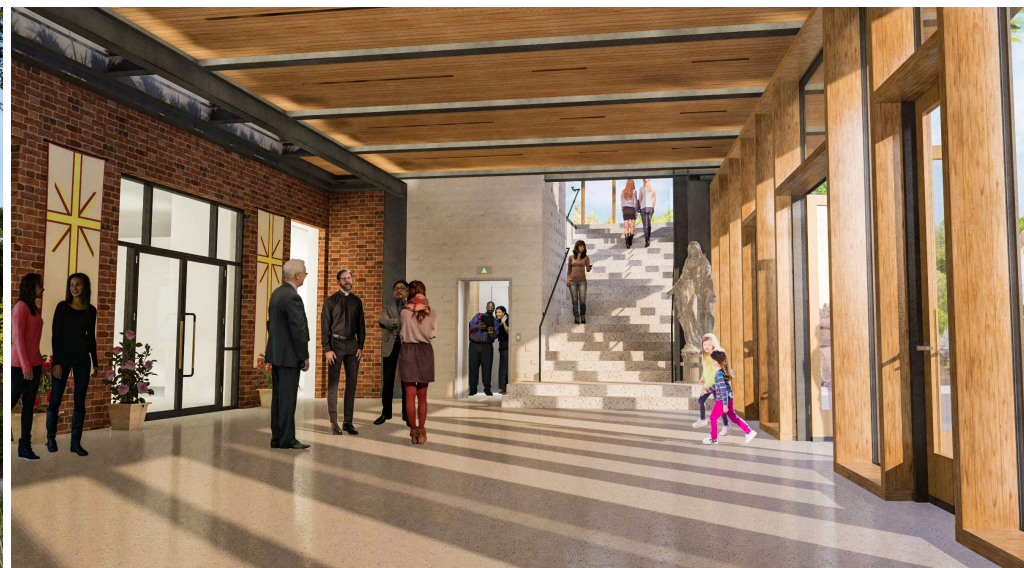


2024

Planning begins to raise \$10M for the next phase of the OLL Master Plan



An investment of \$10M will meaningfully improve Parish facilities, enriching dozens of Parish ministries and our School



CHURCH

PARISH HALL

NEW ENTRANCE

ADORATION CHAPEL

CEMETERY

Sanctuary accessibility, added seating, sound and technology

Enlarged, updated Parish Hall with renovated kitchen

Expanded facilities including new vestibule, clear entrance and stairs

New, dedicated space for Adoration of the Blessed Sacrament

Expanded cemetery to honor past and future parishioners

ENRICHED PARISH MINISTRIES

Mercy teams, sack lunch ministry, meals for the homeless, funeral luncheon ministry, Knights of Columbus, adult faith formation, Bible study, retreats, small faith sharing groups, Respect Life, OCIA-Joining our Catholic faith, Life Kids, Children's Liturgy of the Word, preparation for marriage and sacramental life, Vacation Bible School, Middle School youth group and High School Bible study-CONNECT, Youth Programs, Mornings for Moms Ministry, Eucharist to the sick and home bound, OLL School, OLL School fundraising lunches, OLL School community functions (e.g. dances), Recovery groups—Godshots, Catholics in Recovery and AA

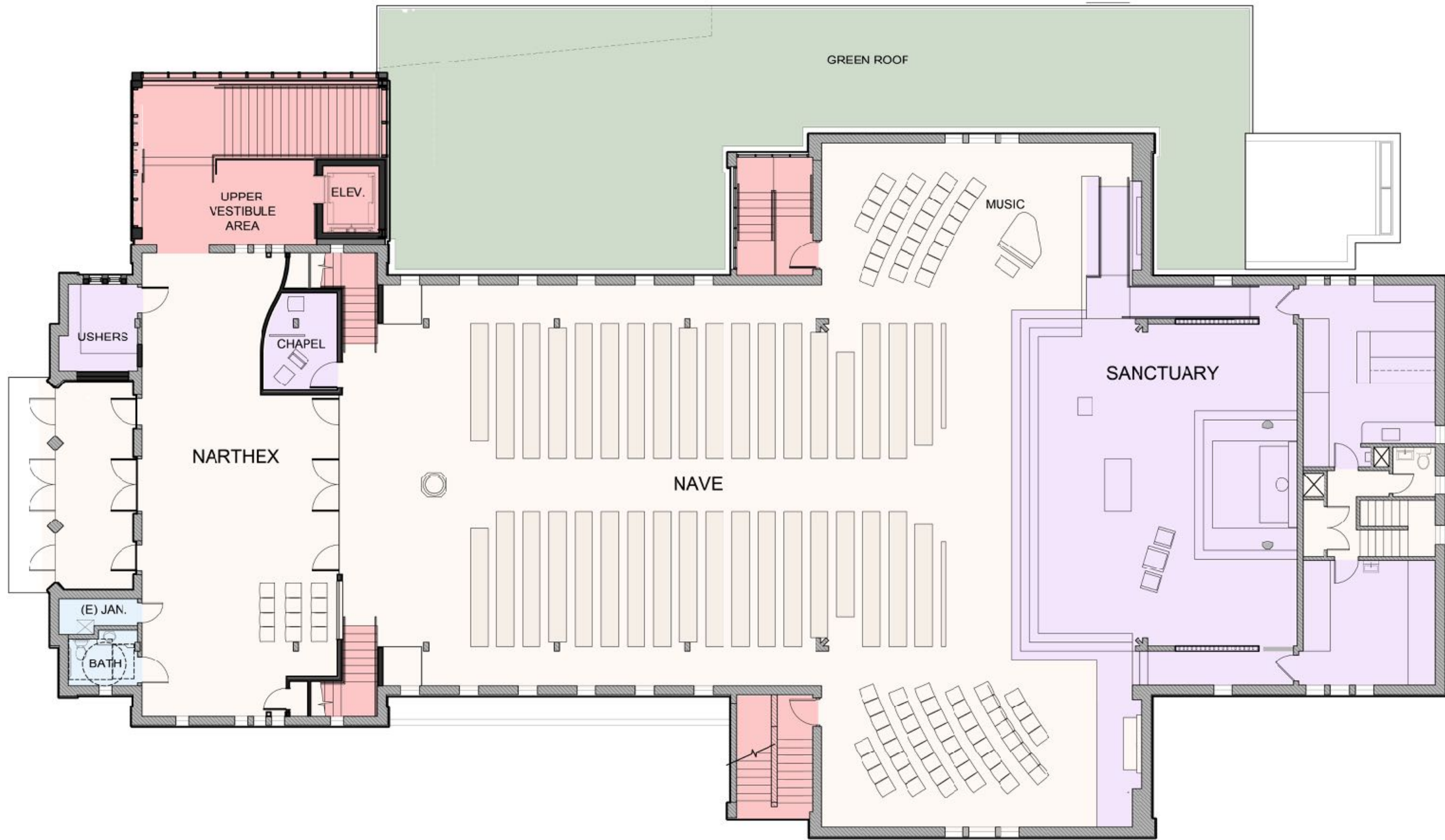
Sanctuary accessibility, added seating, sound and technology



OLL Church Floor Plan

Our sanctuary has needed a refresh for some time, and technological updates will enhance the worship experience for those present and online. We will:

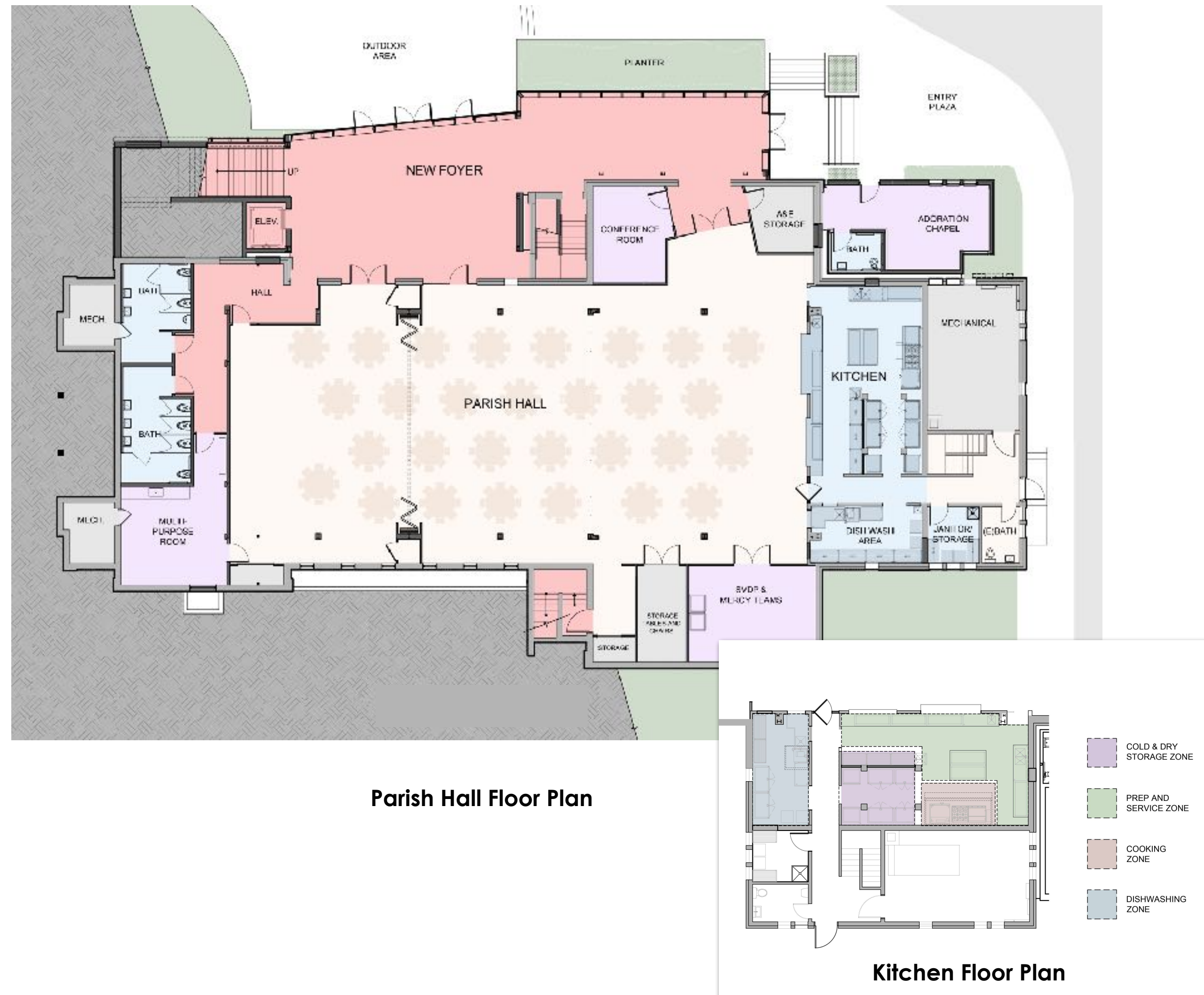
- **Add seating** and create a designated music space in the East transept. Our altar will be more accessible for those with disabilities, making it easier for all to participate.
- **Update the technology** throughout by adding audio-visual equipment and sound support, enhancing worship.
- Improve **access to the loft** by adding stairs to create a structurally sound, safe and flexible space.
- Shorten the altar area to **add seating** in the sanctuary. Add more accessible seating.
- Restore the **stained glass windows** as necessary with new flashing.
- Overall **refresh of the worship space**.



OLL Church Floor Plan



Enlarged, updated Parish Hall and renovated kitchen

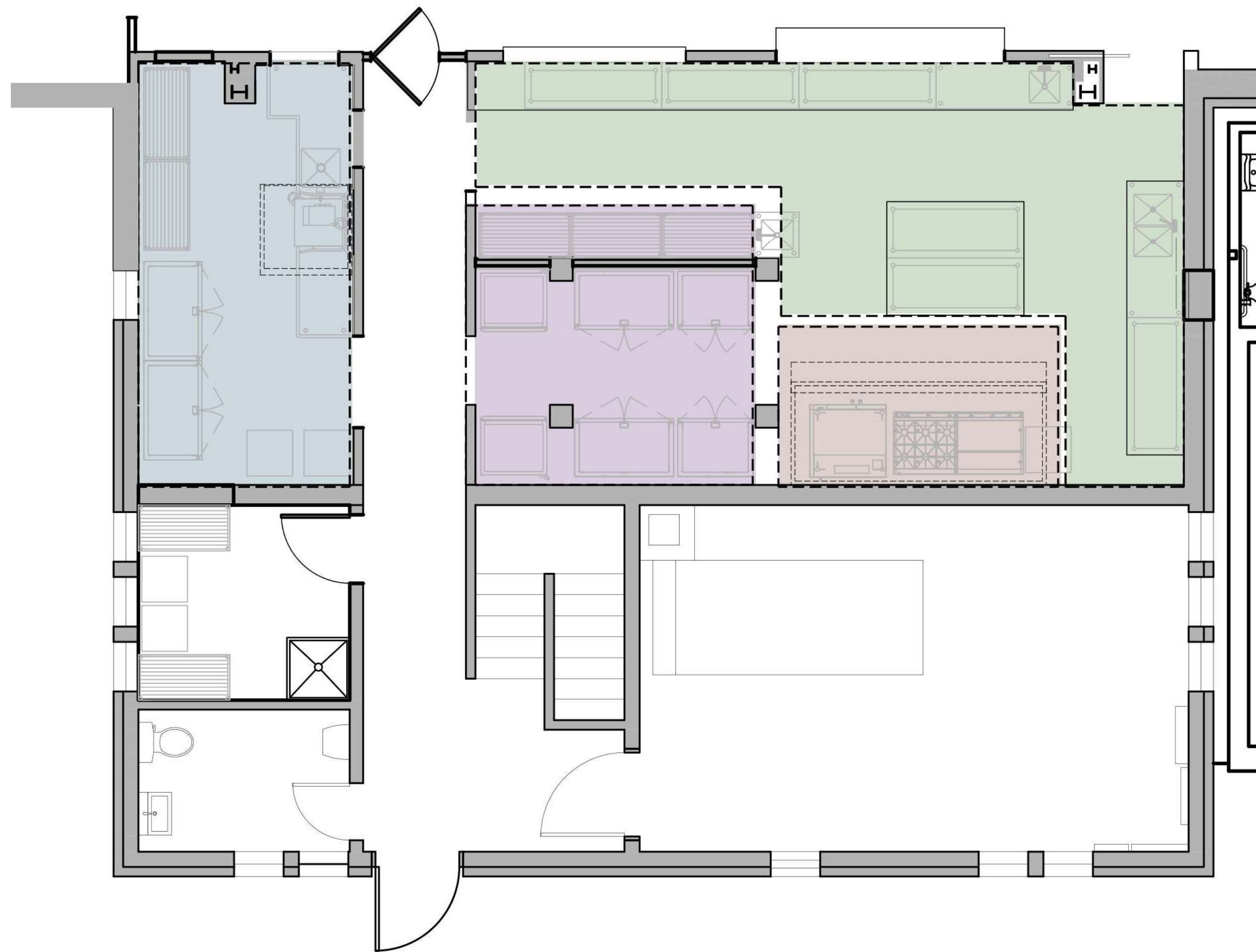


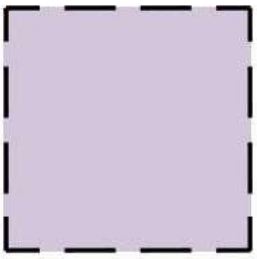
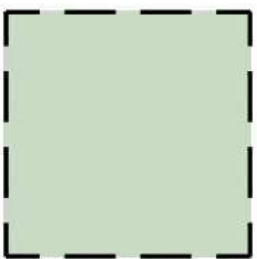
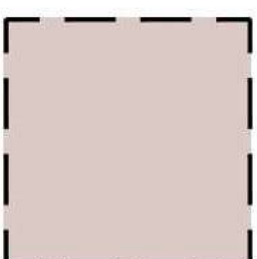
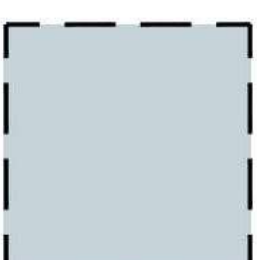
Our parish kitchen will be reconfigured to allow for maximum efficiency and ease of use. We will:

- Create a **user-friendly kitchen** with zones for storage, prep and service, cooking & dishwashing.
- Provide **ample and combined storage** spaces so various ministries will have access to what they need to serve our community.
- **Reconfigure the dining area** for better flow, maximum seating, better egress and more light.
- **Upgrade separation walls** to allow for private meeting spaces, including video technology.
- More and **better meeting spaces**.
- Relocate the **restrooms into one accessible, convenient area** that can be accessed without entering the meeting spaces.
- Move and enlarge the **all purpose room** next to the relocated restrooms. This can be used as a Bride's Room or for other activities as needed.
- Add a **portable stage** for presentations, performances and lectures.
- **Upgrade systems** including the HVAC, electrical and fire alarm/supression.



Parish Hall Floor Plan

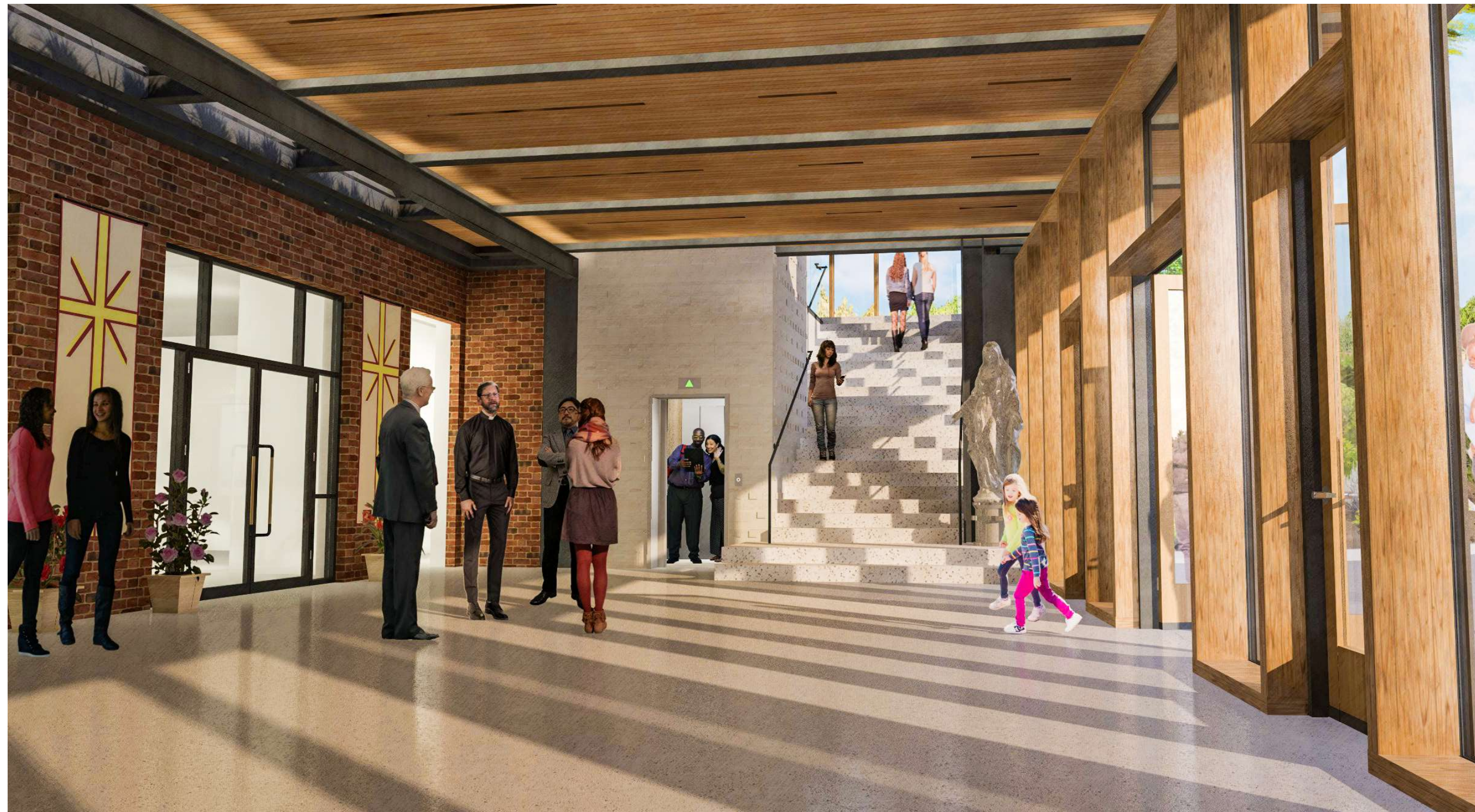


-  COLD & DRY STORAGE ZONE
-  PREP AND SERVICE ZONE
-  COOKING ZONE
-  DISHWASHING ZONE

Kitchen Floor Plan



Expanded facilities, including new vestibule, clear entrance and staircase



The doors of Our Lady of the Lake are open to all — but from the parking lot entrance, the Sanctuary is hard to find. We want to give our church an inviting entrance where all feel welcome and where we have space to greet one another before and after Mass. We will:

- Build a **new entrance** facing the parking lot and the parish center that is well-lit and welcoming.
- This will include an **added foyer** to handle the flow of people up to the church and into the hall.
- Add a **wider stairwell and central elevator** so that all who arrive can enter the narthex together.
- The **new stairs will be visible from our parking area**, thus encouraging people to come in and move up to our worship space.
- Create an **environmentally friendly green roof** with skylights over the new vestibule.

New, dedicated space for Adoration of the Blessed Sacrament



We will **create a chapel dedicated to adoration**. A space for one person or several to sit in quiet prayer in the presence of the Blessed Sacrament, uninterrupted by the regular workings and events in the main church.

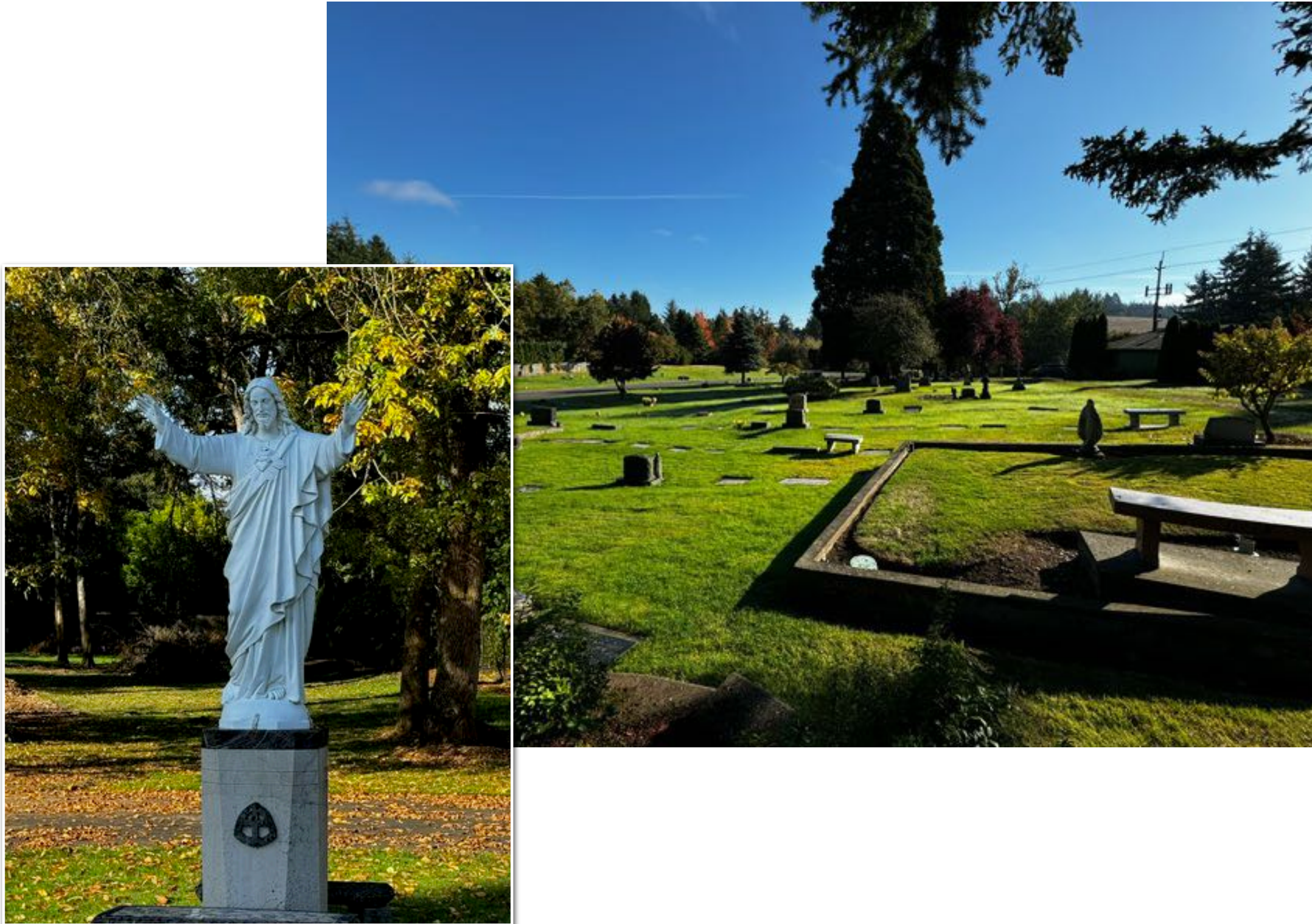
This reminds us of the centrality of the Eucharist in Catholic Life and it allows for the possibility of Perpetual Adoration (24/7).

This chapel will be on the ground level and will feature:

- A **separate entrance** from the parking lot.
- **Secure, coded entry.**
- Seating for **about 10 people.**
- A private restroom.



Expanded cemetery to honor past and future parishioners



Sacred Heart Cemetery—our cemetery—has been in place since long before Lake Oswego was a city. Many of our parish pioneers and generations of current parish members are resting there. In fact, George Rogers is buried in our cemetery along with other family members. We need to expand for our future. We will:

- **Zone the property as a cemetery** in Lake Oswego.
- Build onto the existing road to allow us to **develop the back portion of the property** we acquired in 2017 and new plot.
- **Upgrade the property** with sprinklers and proper drainage, lighting and utilities.
- Create a **fetal and infant burial area** with memorial.
- Purchase **movable canopy covers** for cemetery services and burials.
- Add **meditation areas** for family members.
- Purchase a plot of **adjacent land**.

An investment of \$10M will meaningfully improve Parish facilities, enriching dozens of Parish ministries and our School



CHURCH

Sanctuary accessibility, added seating, sound and technology

\$3.9M



PARISH HALL

Enlarged, updated Parish Hall with renovated kitchen

\$2.3M



NEW ENTRANCE

Expanded facilities including new vestibule, clear entrance and stairs

\$2.5M



ADORATION CHAPEL

New, dedicated space for Adoration of the Blessed Sacrament

\$.4M

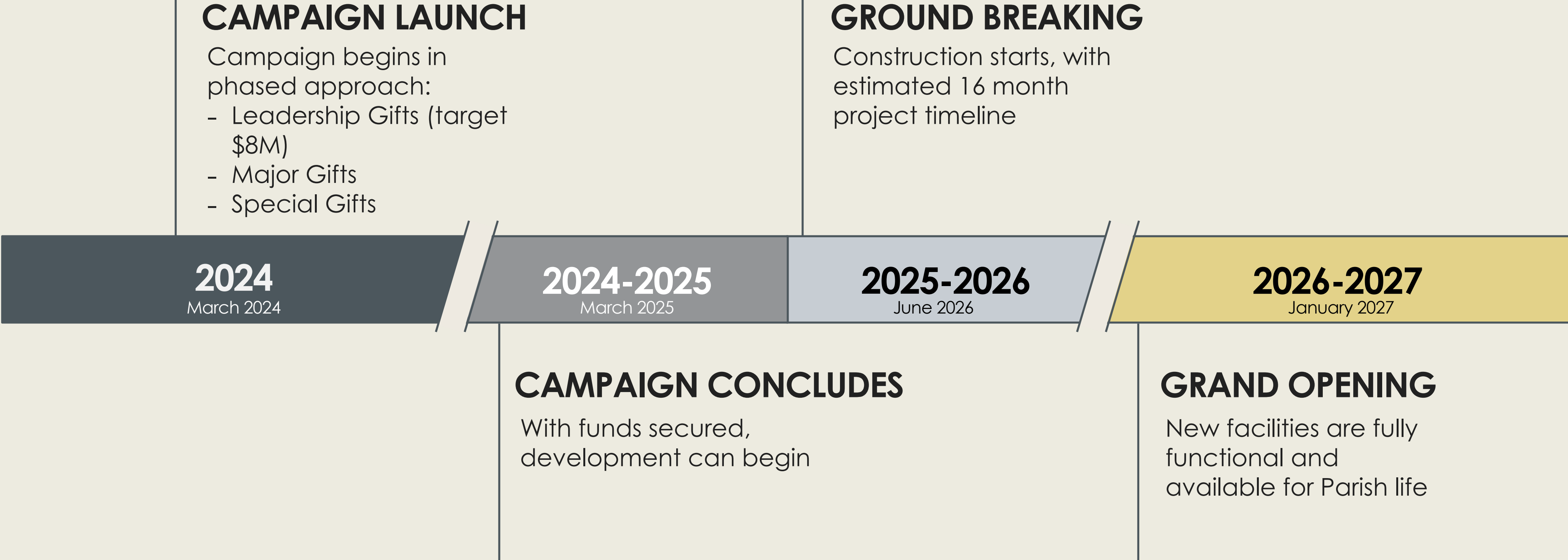


CEMETERY

Expanded cemetery to honor past and future parishioners

\$.7M

The Building Our Future campaign will unfold over 12 months, with target of new facilities open in Fall 2026



Frequently Asked Questions



How long will this take and where will we have Masses while construction is underway?

We anticipate it will be 16 months from groundbreaking to completion. We anticipate having Sunday masses in the Gym, with other programs continuing in the school Sunday morning.

Can we do this in phases? \$10M sounds expensive.

Doing all the remodeling and construction at the same time is inconvenient, but ultimately saves time and money. Once we have cash and pledges to cover the entire cost, we will begin construction with a swing loan from the Archdiocese. Our goal is to complete the project without having to incur debt.

Why do we need an adoration chapel? Don't we offer adoration in the sanctuary now?

We offer adoration of the Blessed Sacrament monthly but with the Adoration Chapel, we will be able to offer it 24 hours every day. We will no longer have to juggle schedules in the sanctuary and those who sign up for adoration will have secure access.

I serve in the funeral ministry, where will we be able to provide this ministry to families while construction is underway?

We will make every effort to provide space for this important ministry in the parish center in one of the larger conference rooms.

I'd love to honor my family member or a Saint dear to my family as I make my gift. What naming opportunities will there be?

At OLL, we have an honor wall in the atrium of the parish center. We honor gifts of \$25K and more on this wall with special tiles. With gifts of \$100K and more, we will place a plaque near the entrance of that room or space with wording as you desire. Gifts of \$1M or more will be honored as desired by donors.

My children attend OLL School, how will this project benefit the work of the school?

Many activities for the school and for our religious education program happen in the parish hall. There are dances and celebratory gatherings following First Communion and Confirmation along with special speakers, lectures, classes, and fun gatherings. Our Children's Liturgy of the Word gathers there each weekend with as many as 50 children gathered for age-appropriate learning.

Ways to Give



Time & Talent

Volunteer to help with the campaign in the office, make phone calls and be part of the team contacting fellow parish members to encourage participation. We hope that 100% of our community will contribute in some way to the success of our campaign. Contact Lynn Andrews at 503-636-7687 for more information.

Join a parish ministry. For more information, call Lynn Andrews at 503-636-7687. Check online for a complete listing of opportunities available. Our vibrant parish community welcomes your participation.

Treasure

Online

Log into Parish Soft and set up a gift alongside your current offertory giving. We ask that a campaign gift not interrupt the support you are already making toward parish operations. Gifts may be made by ACH at no charge, or by credit card where you may pay the processing fee. For help, contact Kristen Young at kristeny@ollparish.com or 503-303-4212.

Check

Feel free to use the special envelopes available in the church or in your parish envelope packets and drop in the Sunday offertory, or mail to the Parish Offices.

Appreciated Assets

We accept gifts of stock. They are facilitated through the Archdiocese of Portland with funds arriving to our parish without transaction fees. Please visit the website or contact Kristen Young with questions.

Donor Advised Funds

As with other gifts of appreciated assets, if you would please let us know you will be sending funds, we will be watching for them.

IRA Distributions

Contact your IRA trustee to initiate the transaction. Forms are available online or in the parish office

Planned Gifts — Bequests

A legacy gift from your will or estate plan will be directed as you wish. Knowing of your intention helps the parish know how to direct such a gift when it arrives and we acknowledge this legacy gift during your lifetime.

Company Matching

Many employers offer a Matching Gift Program that will match an employee's donation to a local charitable organization like Our Lady of the Lake. Some provide matching funds to support employee volunteer hours. Most of these programs match contributions dollar for dollar, and some will even double or triple the amount of your gift.

Requesting a matching gift or volunteer grant is an easy process which must be initiated by the donor or volunteer. Check with your HR department to see if your company offers a Matching Gift program.

